

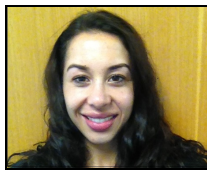
The SUDI Liaison Team



Melanie MacFarlane, Dip.RCN, BSc, MSc, (Ngāti Maniapoto, Raukawa)

Consultant, Communio; Melanie is based in Auckland and project manages the data collection for the **SUDI Nationwide Study**, on behalf of the University of Auckland.

Mobile: 021 330370; Tel: 09 377 6661; melanie.macfarlane@communio.co.nz



Genevieve Ali, BA/BHSc, BAHONS (First Class)

SUDI Liaison and Project Coordinator, Communio; Genevieve is based in Auckland and, with Shelley Jonas, covers **Upper and Central North Island**, including Northland, Auckland, Waitemata, Counties Manukau, Waikato, Bay of Plenty, Taranaki, Lakes and Tairāwhiti DHBs.

Mobile 021 825 518; Tel: 09 377 6661; genevieve.ali@communio.co.nz



Shelley Jonas, NZRN, B. Visual Arts

SUDI Liaison, Communio; Shelley is based in Auckland and, with Genevieve Ali, covers **Upper and Central North Island**, including Northland, Auckland, Waitemata, Counties Manukau, Waikato, Bay of Plenty, Taranaki, Lakes and Tairāwhiti DHBs.

Mobile 021 825 010; Tel: 09 377 6661; shelley.jonas@communio.co.nz



Judy McIntyre, NZRGON, B. Fine Arts (Distinction)

SUDI Liaison, Communio; Judy is based in Palmerston North and covers the **Lower North Island** region incorporating Capital and Coast, Hutt Valley, Wairarapa, Hawkes Bay, MidCentral and Whanganui DHBs. Judy also assists in Taranaki and Tairāwhiti.

Mobile 021 825 856; Tel: 09 377 6661; judy.mcintyre@communio.co.nz



Elaine McLardy, RM, RGON. MZ applied Midwifery

SUDI Liaison, Communio; Elaine is based in Christchurch and covers the **South Island** region incorporating Southern, South Canterbury, West Coast, Canterbury and Nelson Marlborough DHBs.

Mobile 021 825 546; Tel: 09 377 6661; elaine.mclardy@communio.co.nz
